



JAMES
ANDERSON



TO LET

Laneway, London, SW15

£2,250 Per Month

Per Month

A two bedroom family home located on a quiet and peaceful road in the highly sought-after Dover House conservation area. The property provides spacious accommodation and a larger than average rear garden; the ground floor includes an airy reception, newly fitted kitchen and family bathroom. The private garden provides a secluded setting suited for al-fresco dining or just relaxing in the summer sun. Huntingfield Road is located within the popular Dover House Conservation area, benefiting from the picturesque green space of Putney Park Lane and Putney Heath. Located only 1.3 miles from Barnes Station and 1.6 miles to Putney mainline stations offering frequent services to Waterloo. Local bus routes include the No.72 to Hammersmith, 430 to Putney/Kensington and the 337 to Clapham Junction or Richmond.



Two Bedrooms



One Bathroom



Bright Reception



Modern Kitchen



EPC C / Council Tax D / Holding Deposit £519.23



Putney



Roehampton University



Private Garden



Lovely Residential Area

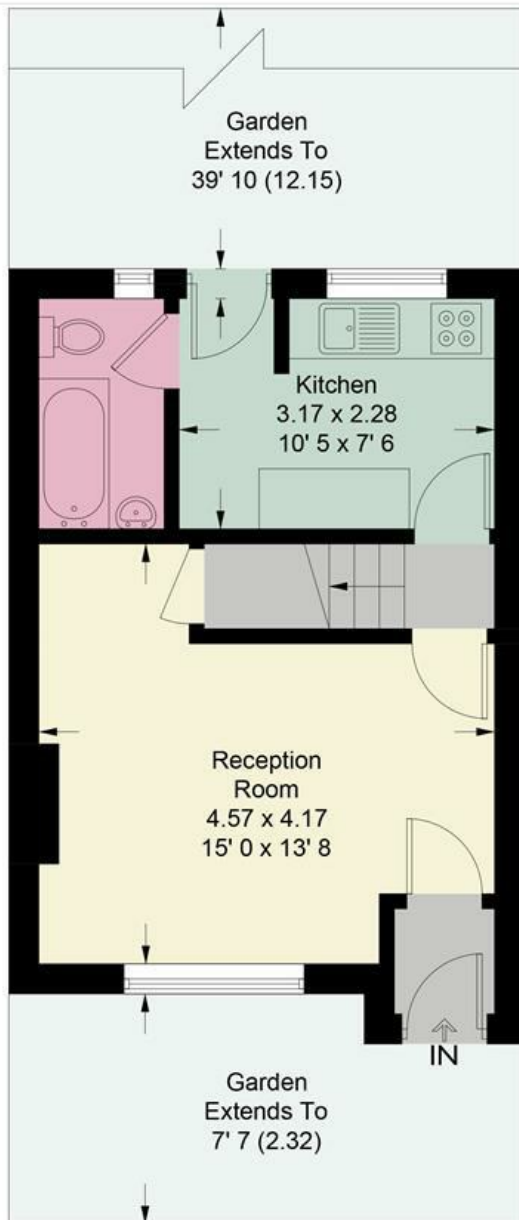


Minimum Term 12 Months / Deposit £2,596.15

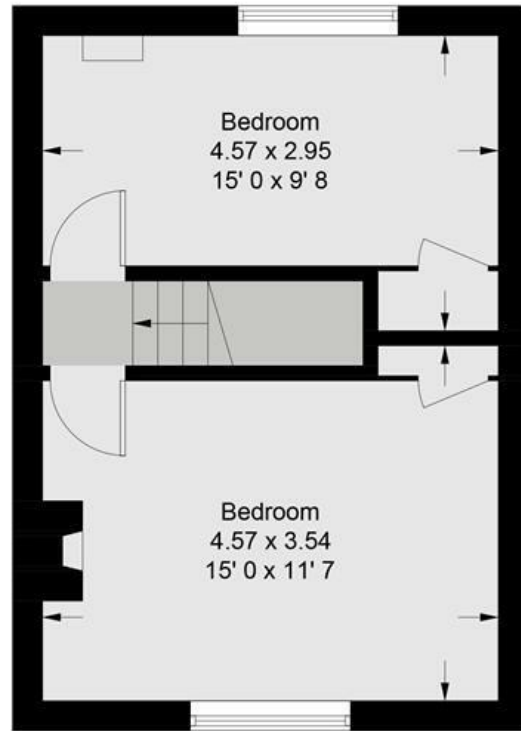


OPEN 7 DAYS A WEEK • Weekdays until 9pm • Weekends until 5pm

0208 785 4400



Ground Floor
334 sq ft / 31 sq m



First Floor
325 sq ft / 30.2 sq m

This plan is not to scale and must be used as layout guidance only. All measurements and areas are approximate and should not be relied upon to provide accurate information. This plan must not be relied upon when making property valuations, design considerations or any other such relevant decisions. We accept no responsibility or liability (whether in contract, tort or otherwise) in relation to any loss whatsoever arising from or in connection with any use of this plan or the adequacy, accuracy or completeness of it or any information within it.

